

Life *and* Other Stories  
The latest Tacchini collection



stylecraft<sup>o</sup>



# Life and Other Stories

## The latest Tacchini collection

**Celebrating a first visit to Australia, Giusi Tacchini, CEO & Art Director of Tacchini Furniture was the special guest at our recent Stylecraft x Tacchini lunch and dinner events, held in both Sydney and Melbourne last week.**

In conversation with Dana Tomic Hughes of Yellowtrace, Giusi Tacchini enlightened guests about the Italian brand's latest home collection 'Life and Other Stories', she spoke about the philosophy behind the Tacchini brand, and how strongly she values the relationship with each designer Tacchini engages with.

The newest collection is comprised of a catalogue of reissued design classics such as Le Mura sofa designed by Mario Bellini in 1972, the Sesann lounge by Gianfranco Frattini in 1970, and Pigreco chair by Tobia Scarpa in 1959, plus contemporary designs by David/Nicolas, Studioepepe and more. Available exclusively from Stylecraft in Australia, the Life & Other Stories collection were showcased during the events held at Beta in Sydney and the Immigration Museum Long Room in Melbourne.

In celebrating each of the pieces in this collection Giusi expressed her measure of a successful product by the strength of the relationship she builds with each designer, rather than the quantity sold.

*"Interiors, as the combination of architecture and design, represent the most important chapters of designing: it is the moment to explore the essence of things and human being feelings. It is the way to shape a tailor-made layout for each spaces, with colours, finishes and materials backgrounds and furnishings. Home is the stage where everyday life acts." - Giusi Tacchini*

### For all media enquiries:

Millie Sandys — Communications & Events Co-ordinator  
[millies@stylecraft.com.au](mailto:millies@stylecraft.com.au)  
 0423 312 229

### Downloadable content:

[View Life and Other Stories Sydney](#)

Photography — Fiona Susanto

[View Life and Other Stories Melbourne](#)

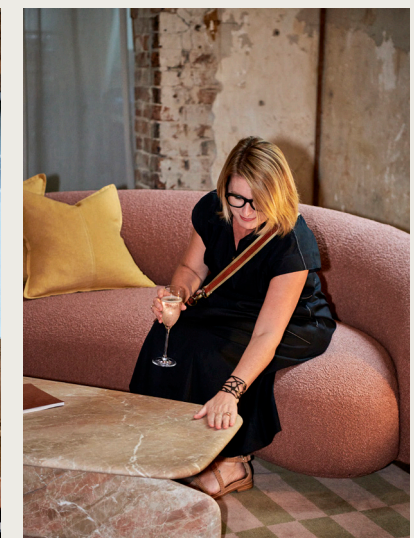
Photography — Kim Landy

[View Life and Other Stories Collection](#)

Photography

*"Each project is the meeting point between experience and research, devotion and emotion, then enriched by passing time in the places where we live, where each of us interacts with our own experiences, in an ongoing relay between present and memory".*

*– Giusi Tacchini, CEO & Art Director*



# Modular Lounges

## Le Mura

Designed by Mario Bellini

Tacchini continues its path of rediscovery of the great design classics by presenting the modular sofa Le Mura by Mario Bellini, originally released in 1972. The re-edition was created in collaboration with Tacchini and the architect himself, transforming the design classic for the contemporary era.

[Click here to read about Le Mura](#)



## Victoria

Designed by David/Nicolas

Victoria is a modular lounge system offering luxurious comfort and an endless array of configurations. With modularity at its core, Victoria is also defined by the tubular supporting frame that provides a floating appearance whilst also creating a crown at the back of the lounge.

[Click here to read about Victoria](#)





# Lounges

## Sesann

Designed by Gianfranco Frattini

A key component of Tacchini's Design Classics collection, the Sesann lounge was designed by Gianfranco Frattini in the 1970's and has been reissued to complement today's style of living. The lounge is characterised by an organic and informal shape and is defined by the tubular metal detail that wraps around the soft, upholstered seat.

[Click here to read about Sesann](#)



## Julep

Designed by Jonas Wagell

Designed by Jonas Wagell, Julep is influenced by the 1950s Avant-Garde movement, drawing upon its simplicity and grandeur. The lounge features an exaggerated, curved form with the recessed base providing a sense of lightness. The Julep lounge is ideal for residential settings, while also suited to contract lobby and hospitality settings.

[Click here to read about Julep](#)



## Five to Nine

Designed by Studiopepe

Five to Nine is a contemporary daybed that can also be used in commercial settings as gallery or lobby seating. Five to Nine features a sequence of roll cushions individually inserted within the solid Ash timber structure.

[Click here to read more about Five to Nine](#)



## Orsola

Designed by Gastone Rinaldi

Designed in 1970 by Gastone Rinaldi, Orsola is part of Tacchini's Design Classic collection. The lounge is inspired by the principles of roundness of form, tradition and innovation, with contemporary upholstery detailing supported by the rounded chrome metal frame, providing a striking yet inviting look.

[Click here to read more about Orsola](#)



# Chairs

## Reversível

Designed by Martin Eisler

Originally designed in 1955 by Martin Eisler, Reversível is original yet informal with its distinctive lines and versatility that transforms any space to casual elegance. The dynamic, flexible reissue of Reversível offers dual comfort with two possible seating positions – to sit in the chair with the back upright, or relax in a semi-reclining position, parallel with the backrest.

[Click here to read more about Reversível](#)



## Elephant

Designed by Karen Chekerdjian

Clear lines and simple volumes are combined with fine cabinet-making in this iconic chair designed by Karen Chekerdjian. Designed with longevity and sustainability in mind, it is suitable for any type of environment.

[Click here to read more about Elephant](#)



## Roma

Designed by Jonas Wagell

With a clear inspiration from the fifties, the Roma Lounge designed by Jonas Wagell is characterised by its soft curving sphere transcending from a lounge to a chaise. Featuring generous proportions, the form of Roma is juxtaposed with its slimline frame.

[Click here to read more about Roma](#)



## Pigreco

Designed by Tobia Scarpa

Designed by Tobia Scarpa as his first furniture design and part of his graduation project at the University of Venice in 1959, Pigreco forms part of Tacchini's re-edition collection. The new chair remains true to the original design, with new materials and finishes to fit within contemporary domestic spaces.

[Click here to read more about Pigreco](#)





# Tables

## Trampolino

Designed by Monica Förster

Trampolino is a coffee and side table collection characterised by the timber base with a central leg that runs along its entire length allowing the marble table top to appear suspended. Comprising three core elements, the design of Trampolino allows the tables to be arranged in a cantilevered form.

[Click here to read more about Trampolino](#)



## Mill

Designed by Monica Förster

Designed by Monica Förster, reminiscent of a classical stone mill, the collection is available in coffee and side table variants. Conveying the story of two elements in unison, the Mill coffee and side table revisits the traditional table design with the central support transversing through the table top surface.

[Click here to read more about Mill](#)



## Kanji

Designed by Monica Förster

Designed by Monica Förster the Kanji collection is inspired by calligraphy with the intersecting heavy and light elements referencing ink marks drawn on paper.

[Click here to read more about Kanji](#)



## Dolmen

Designed by Noé Duchaufour-Lawrance

Born from the creativity of Noé Duchaufour-Lawrance, the Dolmen tables become sculptures that appear to emerge from the ground. Providing a true design statement, Dolmen tables are simple and primitive, smooth and perfectly polished, either solitary or close to each other.

[Click here to read more about Dolmen](#)



# Tables

## Cage

Designed by Gordon Guillaumier

Minimalism and elegance characterise the Cage coffee tables designed by Gordon Guillaumier, with their metal base that is both support and frame for the marble top.

[Click here to read more about Cage](#)



## Joaquim

Designed by Giorgio Bonaguro

Inspired by the 40s and 60s modernist architecture in Brazil, Joaquim designed by Giorgio Bonaguro features elegant lines and geometric forms merge to pay homage to mid century Brazilian design. The collection has been designed to salvage off-cuts, fully embracing the principles of upcycling and environmental sustainability.

[Click here to read more about Joaquim](#)



## Pluto

Designed by Studiopepe

Designed by Studiopepe, the Pluto coffee tables are essentially sculptural forms featuring bold details referencing cubism, where depending on the perspective the tables appearance seems to change.

[Click here to read more about Pluto](#)



## Togrul

Designed by Gordon Guillaumier

Minimalist lines and elegant curves define the harmonious and sculptural silhouette of the Togrul table designed by Gordon Guillaumier, who pushes the boundaries by creating a table suitable for both commercial and residential settings.

[Click here to read more about Togrul](#)





# Rugs

## Anni

Designed by Studiopepe

The Anni rugs natural tones intertwine with different motifs and shapes, with bright coloured details that catch the eye. Designed by Studiopepe with the intention to be layered, contrasts of patterns, textures and colours take shape when the Anni rugs overlap.

[Click here to read more about Anni](#)



## Linea

Designed by Maria Gabriella Zecca

Designed by Maria Gabriella Zecca, Linea features a contemporary yet classical design. Each Linea rug is created by combining two colours in parallel lines.

[Click here to read more about Linea](#)



## Umbra

Designed by Maria Gabriella Zecca

The umbra rug designed by Maria Gabriella Zecca was inspired by the studies and movement of light on surfaces and the projections they create. The asymmetric composition of Umbra makes it easy to combine two rugs of different shapes and sizes, to create a unique piece for various settings.

[Click here to read more about Umbra](#)

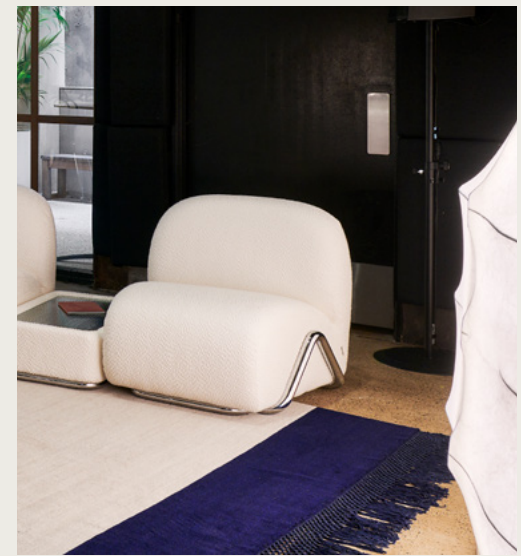


## Campo

Designed by Claesson Koivisto

Ancient wisdom and contemporary design weave together in the Campo rug collection. Designed by Claesson Koivisto Rune, each rug is hand woven by skilled artisans in Nepal using 100% Himalayan wool.

[Click here to read more about Campo](#)





# Accessories

## A.D.A Table Lamp

Designed by Umberto Riva

Designed by Umberto Riva, the A.D.A. lamp is reminiscent of the archetype of a table lamp, yet in an exaggerated form. The lamp's anatomy is formed by two truncated cones manufactured from tinted fiberglass, which when illuminated from within become translucent and offer a glimpse of the fibres within the material. This lends texture to the illumination and enables a unique variance of colour when the lamp is on.

[Click here to read more about A.D.A Table Lamp](#)



## Gunta Screen

Designed by Studiopepe

Designed by Studiopepe, the Gunta Screen is an ethereal and floating sculpture that is able to divide a space yet at the same unite it while providing a warm and suffused glow.

[Click here to read more about Gunta Screen](#)



## Friedl, Lucie & Marlene Vase

Designed by Studiopepe

Archetypes, lines and geometries come together in an irregular collection of vases - Friedl, Lucie and Marlene. Designed by Studiopepe, this family of ceramic vases highlights the intrinsic beauty of simplicity.

[Click here to read more about Friedl, Lucie & Marlene Vases](#)



## Pi-Dou Vase

Designed by Alvino Bagni

The Pi-Dou vase is a re-edition of the eponymous vase created by Florentine artisan Alvino Bagni. Inspired by the exterior of the Pompidou Centre in Paris, the vase is formed by two intersecting elements based on the tubes that run along the façade of the museum.

[Click here to read more about Pi-Dou Vase](#)



# Accessories

## Venus Vase

Designed by Studiopepe

Designed by Studiopepe, the Venus vase is named in honour of the Roman God associated with beauty and harmonious shapes. Reminiscent of classic shapes with a contemporary twist, the sinuous lines of Venus form a double mouthed silhouette, with a touch of individuality from the craftsmanship of working in ceramics.

[Click here to read more about Venus Vase](#)



## Aqua Regis Vase

Designed by Studiopepe

Designed by Studiopepe, Aqua Regis is a contemporary interpretation of the traditional amphora providing a striking object within the home.

[Click here to read more about Aqua Regis Vase](#)



## Mantiqueira Vase

Designed by Domingos Totora

Designed by Studiopepe, Mantiqueira is an inspired collection of vases encapsulating art and nature. Offering sustainability in a creative form, Mantiqueira is formulated from recycled cardboard that is reduced to pulp which is then hand moulded to its' sculptural shape.

[Click here to read more about Mantiqueira Vase](#)



## Bubble Vase

Designed by Alvino Bagni

Designed by Florentine artisan Alvino Bagni, the Bubble vase collection is the perfect blend of materiality, tradition and aesthetic beauty. Each piece is hand turned by crafted artisans so individual variations may be apparent.

[Click here to read more about Bubble Vase](#)





# Contact



## Adelaide

11 Waymouth St Adelaide  
South Australia 5000 Australia  
T: **+61 8 8425 0050**  
E: [adelaide@stylecraft.com.au](mailto:adelaide@stylecraft.com.au)

## Brisbane

Level 1, 50 James Street  
Fortitude Valley Brisbane  
QLD 4006 Australia  
T: **+61 7 3244 3000**  
E: [brisbane@stylecraft.com.au](mailto:brisbane@stylecraft.com.au)

## Canberra

Suite 123, Level 1,  
Mode 3 24 Lonsdale Street  
Braddon ACT 2612 Australia  
T: **+61 2 6225 2900**  
E: [canberra@stylecraft.com.au](mailto:canberra@stylecraft.com.au)

## Melbourne

Levels 1-3, 145 Flinders Lane  
Melbourne VIC 3000 Australia  
T: **+61 3 9666 4300**  
E: [melbourne@stylecraft.com.au](mailto:melbourne@stylecraft.com.au)

## Melbourne HOME

Ground & Lower Ground, 145 Flinders  
Lane, Melbourne VIC 3000 Australia  
T: **+61 3 9666 4300**  
E: [melbourne@stylecraft.com.au](mailto:melbourne@stylecraft.com.au)

## Perth

Level 1, 342 Murray Street  
Perth WA 6000 Australia  
T: **+61 8 9466 4066**  
E: [perth@stylecraft.com.au](mailto:perth@stylecraft.com.au)

## Sydney

Level 24, 100 William Street  
Woolloomooloo NSW 2011  
Australia  
T: **+61 2 9355 0000**  
E: [sydney@stylecraft.com.au](mailto:sydney@stylecraft.com.au)

## Sydney HOME

Ground Floor, 100 William Street  
Woolloomooloo NSW 2011  
Australia  
T: **+61 2 9355 0000**  
E: [sydney@stylecraft.com.au](mailto:sydney@stylecraft.com.au)

## Singapore

Unit #01-01 3 Lim Teck Kim Rd  
088934 Singapore  
T: **+65 6511 9328**  
E: [singapore@stylecraft.asia](mailto:singapore@stylecraft.asia)

## Online

[stylecraft.com.au](http://stylecraft.com.au)  
[stylecraftoutlet.com.au](http://stylecraftoutlet.com.au)